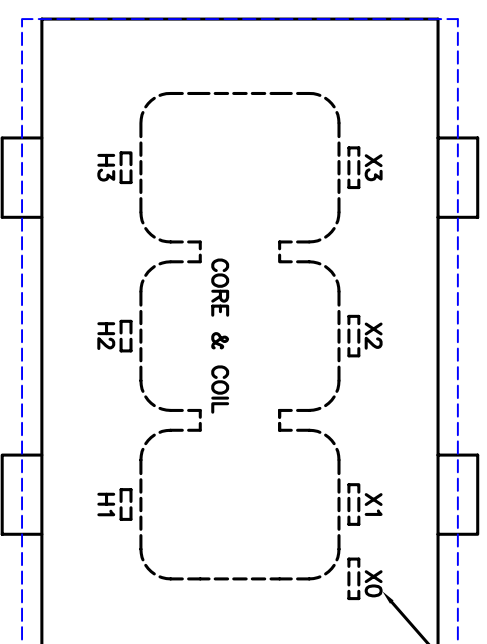


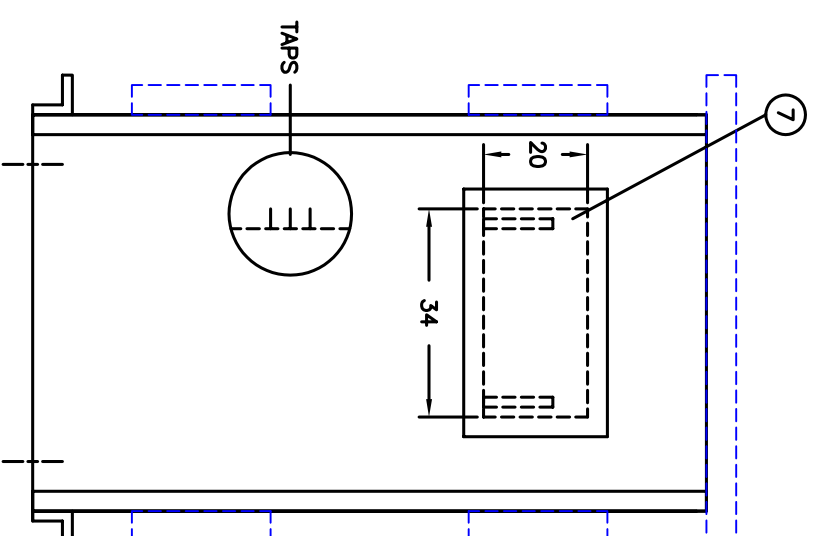
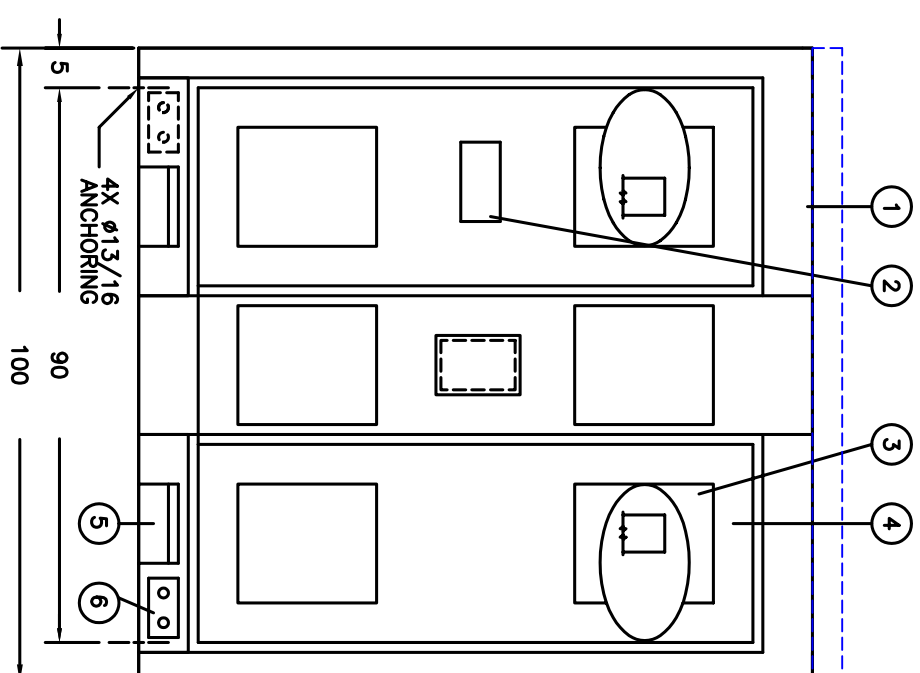
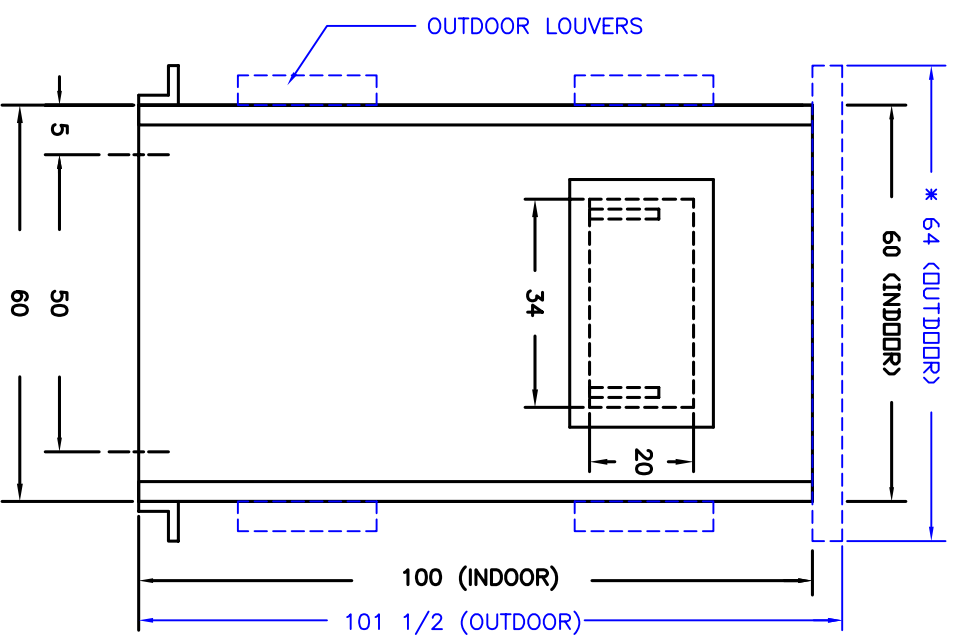
°C RISE	KVA	KV CLASS	KV BIL.
	1000	25	110
		1.2	10
150°C	2000	5	30
		15	60, 95



SEE NOTE #8

FOR REFERENCE ONLY

LEGEND	
ITEM QTY	DESCRIPTIONS
1 3	REMOVABLE TOP COVER - FLUSH FOR INDOOR, * CAPPED FOR OUTDOOR
2 1	DIAGRAMATIC NAMEPLATE
3 12	VENT - SCREEN FOR INDOOR/ LOUVERS FOR OUTDOOR
4 4	BOLTED PANEL
5 4	JACK PAD
6 2	GROUND PAD - NEMA STANDARD
7 2	CABLE/BUS ENTRY CUTOUT WITH COVER



S.O. NO: \_\_\_\_\_  
 DWG FOR:  RECORD  APPROVAL  QUOTE

CUST./JOB NAME: \_\_\_\_\_  
 CUST ORDER NO: \_\_\_\_\_  
 SERIAL NO: \_\_\_\_\_  
 ID TAG: \_\_\_\_\_

KVA: \_\_\_\_\_  
 HIGH VOLTAGE: \_\_\_\_\_  
 LOW VOLTAGE: \_\_\_\_\_  
 HV TAPS: 2A2B 2 1/2%

HV-KV BIL: \_\_\_\_\_  
 LV-KV BIL: \_\_\_\_\_  
 PHASE: 3  
 FREQ-HZ: 60  
 TEMP RISE-°C: \_\_\_\_\_  
 INSUL. CLASS: 220°C  
 COOLING CLASS: AA  
 WINDING COND: \_\_\_\_\_  
 PAINT/COATING: ANSI 61 GRAY  
 APPRX WT-LBS: \_\_\_\_\_

HV COORD: \_\_\_\_\_  INDOOR  
 LV COORD: \_\_\_\_\_  OUTDOOR

NOTES:

- 1) THIS DRAWING IS NOT FOR CONSTRUCTION PURPOSES.
- 2) K FACTOR MIGHT CHANGE CASE DIMENSIONS.
- 3) TRANSFORMERS ARE MANUFACTURED AND TESTED PER APPLICABLE ANSI, NEMA AND IEEE STDS, LATEST REVISION.
- 4) UNLESS OTHERWISE SPECIFIED, ALL DIMENSIONS ARE IN INCHES WITH ±1/4" TOLERANCE.
- 5) TRANSFORMER IS U.L. LISTED.
- 6) TRANSFORMER NOT TO BE INSTALLED IN PUBLIC ACCESSIBLE LOCATION, OTHERWISE IT MUST BE FENCED OR ISOLATED.
- 7) WEIGHTS, DIMENSIONS & CONSTRUCTION MAY CHANGE WITHOUT PRIOR NOTICE.
- 8) FOR LV WYE CONNECTION ONLY.

PAGE 1 OF 1	SCALE: NONE
BY	DATE
CADD: LGL	8/20/99
CHKD: VHA	9/18/03
APPD:	

TITLE: DRY TRANSFORMER OUTLINE  
 DRY TYPE UNIT SUBSTATION

DRW NO. 10010060U  
 REV. \_\_\_\_\_

**MGM TRANSFORMER CO.**  
 CITY OF COMMERCE, CALIFORNIA  
 TEL: (323) 728-0888, FAX: (323) 728-8182