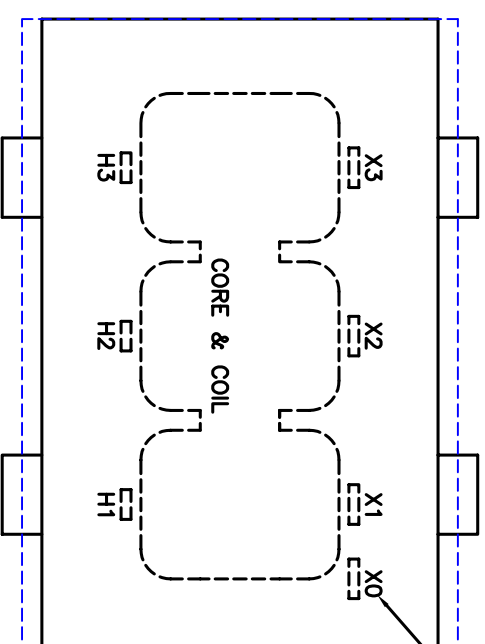


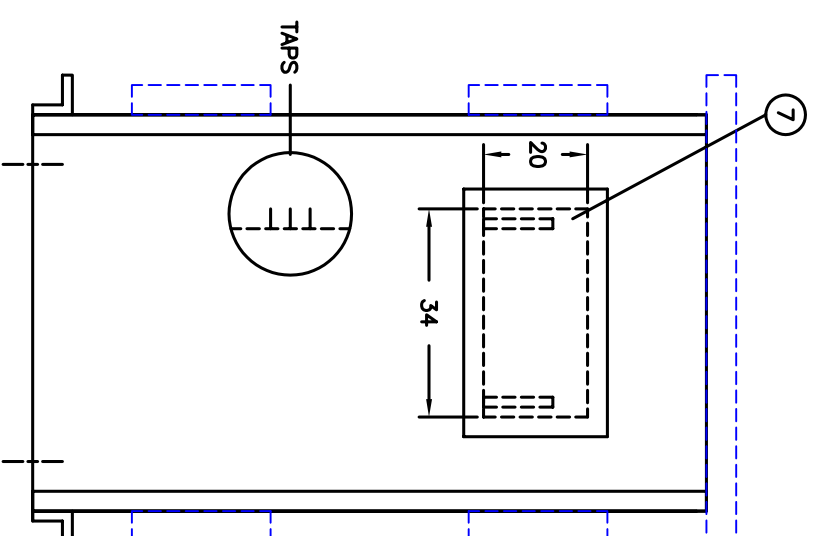
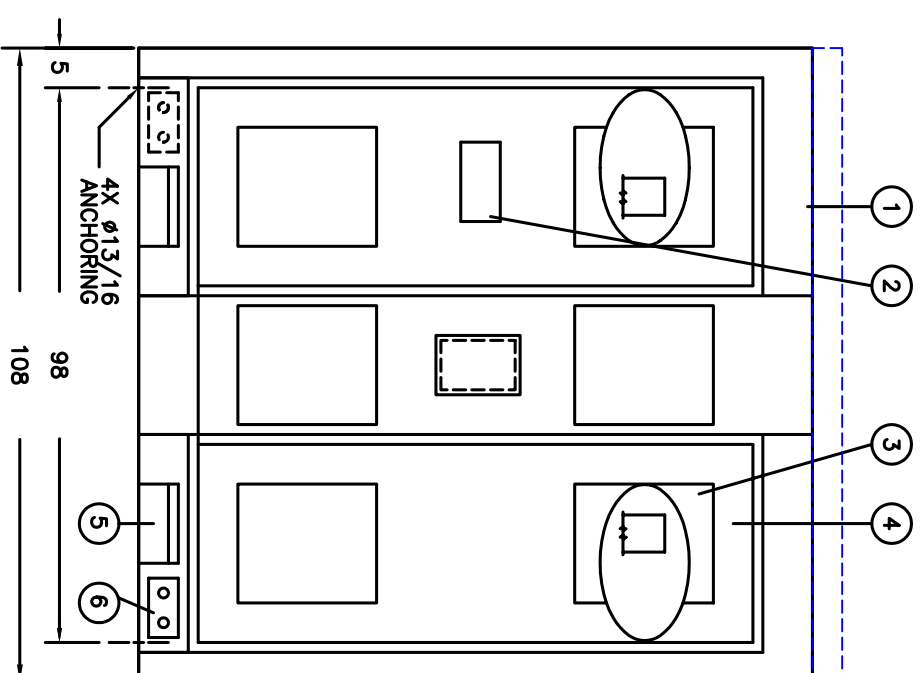
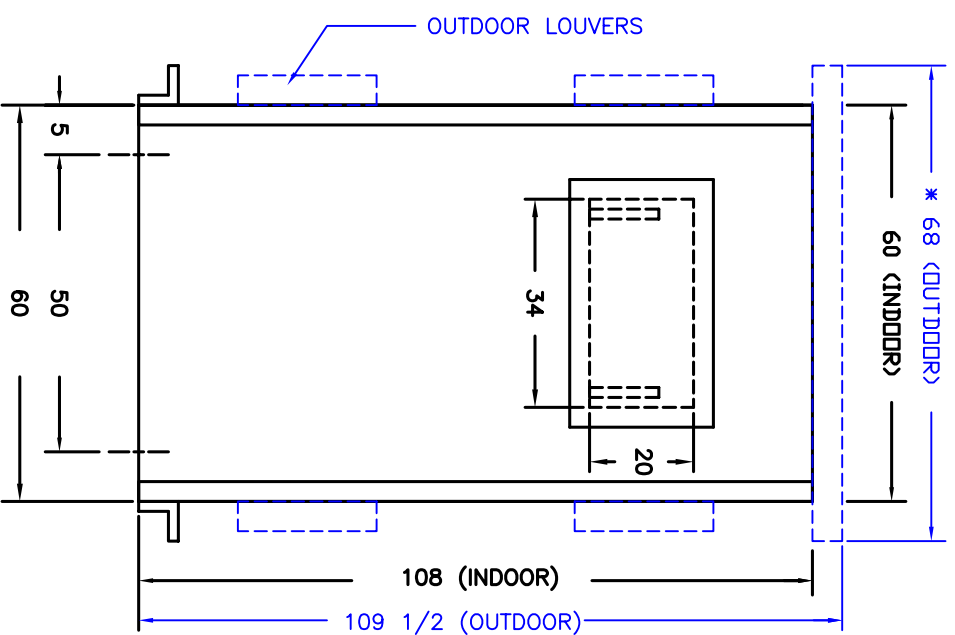
°C RISE	KVA	KV CLASS	KV BIL
150°C	1500, 2000	25	110
	2500, 3000	15	60, 95
	2500, 3000	5	30



SEE NOTE #8

FOR REFERENCE ONLY

LEGEND	
ITEM QTY	DESCRIPTIONS
1 3	REMOVABLE TOP COVER - FLUSH FOR INDOOR, * CAPPED FOR OUTDOOR
2 1	DIAGRAMATIC NAMEPLATE
3 12	VENT - SCREEN FOR INDOOR/ LOUVERS FOR OUTDOOR
4 4	BOLTED PANEL
5 4	JACK PAD
6 2	GROUND PAD - NEMA STANDARD
7 2	CABLE/BUS ENTRY CUTOUT WITH COVER



- NOTES:
- 1) THIS DRAWING IS NOT FOR CONSTRUCTION PURPOSES.
  - 2) K FACTOR MIGHT CHANGE CASE DIMENSIONS.
  - 3) TRANSFORMERS ARE MANUFACTURED AND TESTED PER APPLICABLE ANSI, NEMA AND IEEE STDS, LATEST REVISION.
  - 4) UNLESS OTHERWISE SPECIFIED, ALL DIMENSIONS ARE IN INCHES WITH ±1/4" TOLERANCE.
  - 5) TRANSFORMER IS U.L. LISTED.
  - 6) TRANSFORMER NOT TO BE INSTALLED IN PUBLIC ACCESSIBLE LOCATION, OTHERWISE IT MUST BE FENCED OR ISOLATED.
  - 7) WEIGHTS, DIMENSIONS & CONSTRUCTION MAY CHANGE WITHOUT PRIOR NOTICE.
  - 8) FOR LV WYE CONNECTION ONLY.

S.O. NO:	<input type="checkbox"/> RECORD <input type="checkbox"/> APPROVAL <input type="checkbox"/> QUOTE
DWG FOR:	
CUST/JOB NAME:	
CUST ORDER NO:	
SERIAL NO:	
ID TAG:	
KVA:	
HIGH VOLTAGE:	
LOW VOLTAGE:	
HV TAPS:	2A2B 2 1/2%
HV-KV BIL:	
LV-KV BIL:	
PHASE:	3
FREQ-HZ:	60
TEMP RISE-°C:	
INSUL. CLASS:	220°C
COOLING CLASS:	AA
WINDING COND:	
PAINT/COATING:	ANSI 61 GRAY
APPRX WT-LBS:	
HV COORD:	<input type="checkbox"/> INDOOR
LV COORD:	<input type="checkbox"/> OUTDOOR

PAGE 1 OF 1	SCALE: NONE	TITLE:	DRY TRANSFORMER OUTLINE
BY:	DATE:		DRY TYPE UNIT SUBSTATION
CADD: LGL	8/20/99		
CHKD: VHA	9/18/03		
APPD:			
REVISIONS			
		<b>MGM TRANSFORMER CO.</b> <small>CITY OF COMMERCE, CALIFORNIA          TEL: (323) 728-0888, FAX: (323) 728-8182</small>	
	DRW NO.	NO.	REV.
	10810860U		