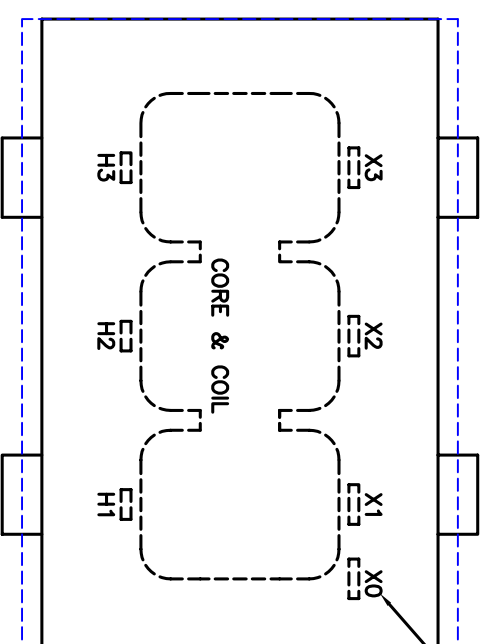


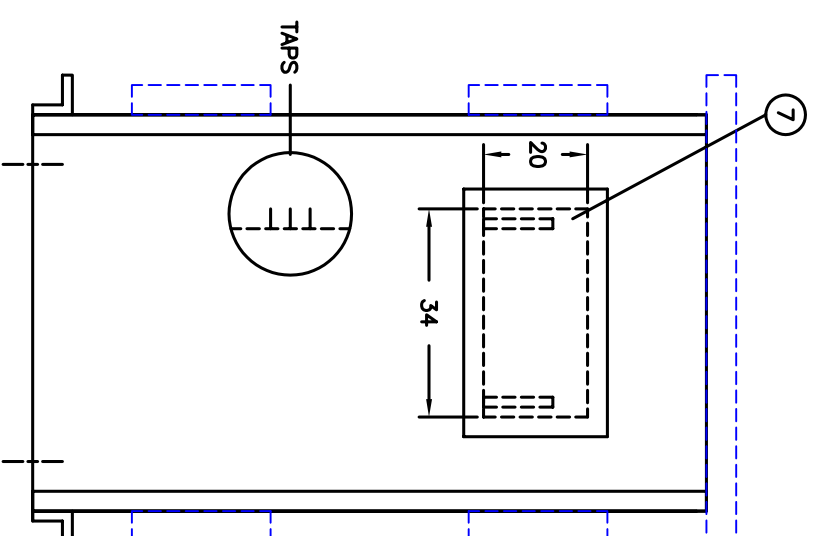
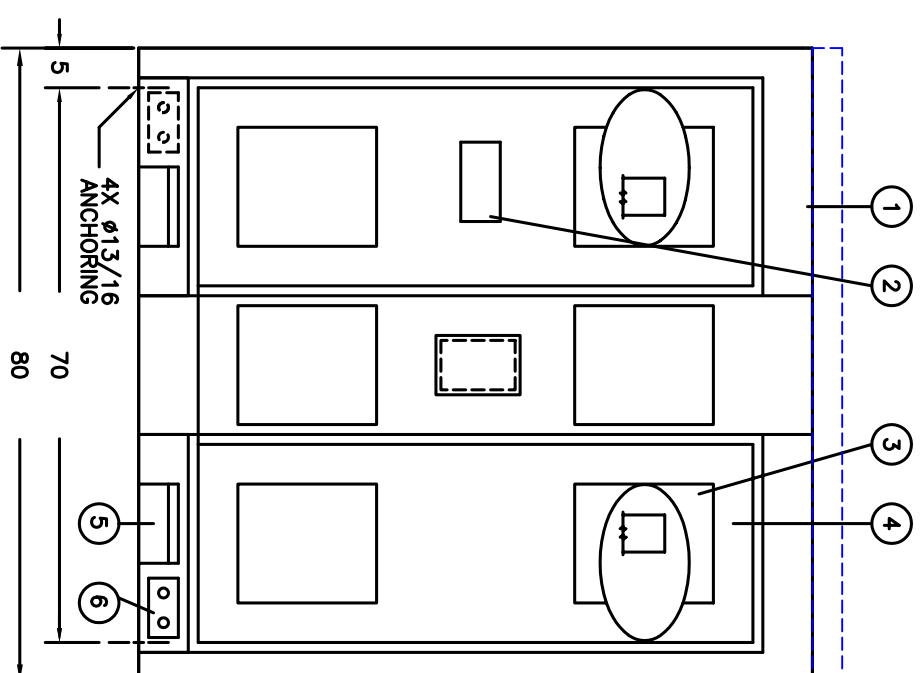
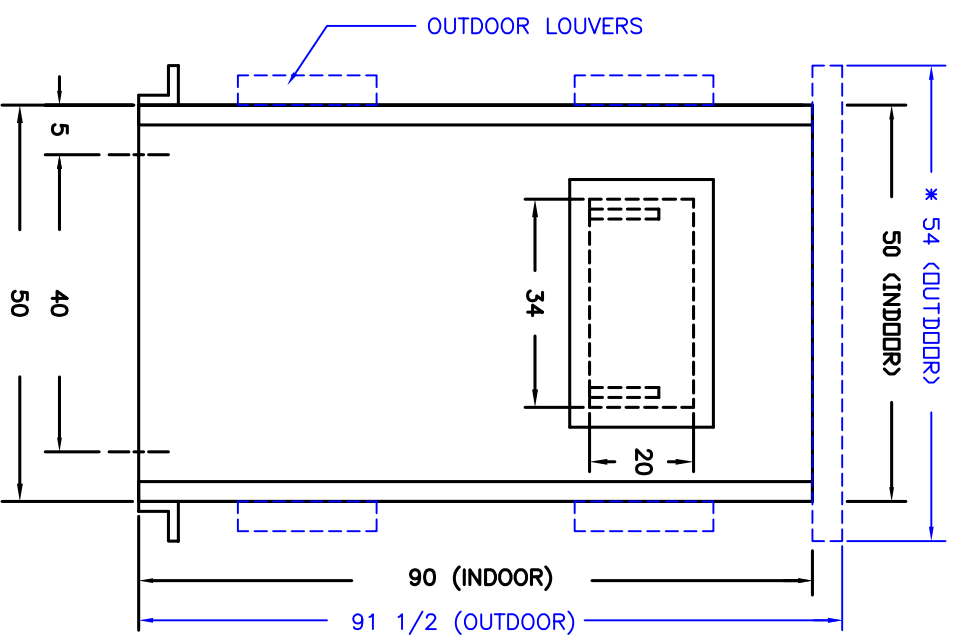
| °C RISE | KVA  | KV CLASS | KV BIL. |
|---------|------|----------|---------|
|         | 500  | 25       | 110     |
| 150°C   | 750  | 5        | 30      |
|         | 1000 | 1.2      | 60, 95  |
|         |      |          | 10      |



SEE NOTE #8

FOR REFERENCE ONLY

| LEGEND   |   |
|----------|---|
| ITEM QTY | DESCRIPTIONS  |
| 1 3      | REMOVABLE TOP COVER - FLUSH FOR INDOOR,<br>* CAPPED FOR OUTDOOR |
| 2 1      | DIAGRAMATIC NAMEPLATE   |
| 3 12     | VENT - SCREEN FOR INDOOR/ LOUVERS FOR OUTDOOR                   |
| 4 4      | BOLTED PANEL  |
| 5 4      | JACK PAD  |
| 6 2      | GROUND PAD - NEMA STANDARD                                      |
| 7 2      | CABLE/BUS ENTRY CUTOUT WITH COVER                               |



|                             |  |
|-----------------------------|--|
| S.O. NO:                    | <input type="checkbox"/> RECORD <input type="checkbox"/> APPROVAL <input type="checkbox"/> QUOTE |
| DWG FOR:                    |  |
| CUST./JOB NAME:             |  |
| CUST ORDER NO:              |  |
| SERIAL NO:                  |  |
| ID TAG:                     |  |
| KVA:                        |  |
| HIGH VOLTAGE:               |  |
| LOW VOLTAGE:                |  |
| HV TAPS: 2A2B 2 1/2%        |  |
| HV-KV BIL:                  |  |
| LV-KV BIL:                  |  |
| PHASE: 3                    |  |
| FREQ-HZ: 60                 |  |
| TEMP RISE-°C: 60            |  |
| INSUL. CLASS: 220°C         |  |
| COOLING CLASS: AA           |  |
| WINDING COND:               |  |
| PAINT/COATING: ANSI 61 GRAY |  |
| APPRX WT-LBS:               |  |
| HV COORD:                   | <input type="checkbox"/> INDOOR  |
| LV COORD:                   | <input type="checkbox"/> OUTDOOR   |

**NOTES:**

- 1) THIS DRAWING IS NOT FOR CONSTRUCTION PURPOSES.
- 2) K FACTOR MIGHT CHANGE CASE DIMENSIONS.
- 3) TRANSFORMERS ARE MANUFACTURED AND TESTED PER APPLICABLE ANSI, NEMA AND IEEE STDS, LATEST REVISION.
- 4) UNLESS OTHERWISE SPECIFIED, ALL DIMENSIONS ARE IN INCHES WITH ±1/4" TOLERANCE.
- 5) TRANSFORMER IS U.L. LISTED.
- 6) TRANSFORMER NOT TO BE INSTALLED IN PUBLIC ACCESSIBLE LOCATION, OTHERWISE IT MUST BE FENCED OR ISOLATED.
- 7) WEIGHTS, DIMENSIONS & CONSTRUCTION MAY CHANGE WITHOUT PRIOR NOTICE.
- 8) FOR LV WYE CONNECTION ONLY.

|             |               |                                |
|-------------|---------------|--------------------------------|
| PAGE 1 OF 1 | SCALE: NONE   | TITLE: DRY TRANSFORMER OUTLINE |
| BY: _____   | DATE: 8/20/99 | DRY TYPE UNIT SUBSTATION       |
| CHKD: VHA   | 9/18/03       | DRW NO. 908050U                |
| APPD: _____ |               | REV. _____                     |
| REVISIONS   |               |                                |



**MGM TRANSFORMER CO.**  
CITY OF COMMERCE, CALIFORNIA  
TEL: (323) 728-0888, FAX: (323) 728-8182