



# MGM TRANSFORMER COMPANY

CITY OF COMMERCE, CA 90040

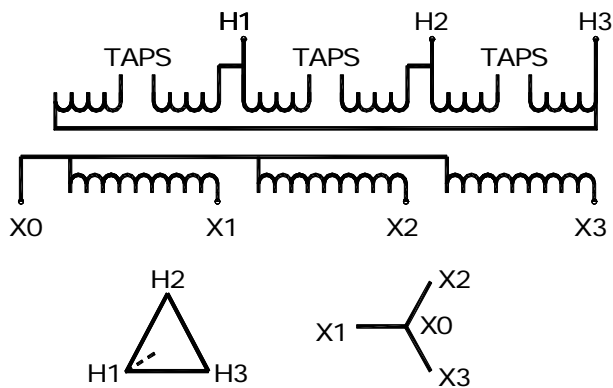
XX KVA                      3    PHASE                      60 HZ                      TYPE    HT

VOLTAGE                      240    -    208Y/120                      W/(1) E. SHIELD

INSUL. SYS. 220° C                      150 ° C    RISE                      COOLING CLASS "AA"

CAT. NO. HT(XX)C3B2SH                      IMPEDANCE                      % AT    170 ° C

SN.                      WEIGHT                      LBS.    APPROX.



CONNECT TAPS	VOLTAGE
4 - 5	252
4 - 6	246
3 - 5	240
3 - 6	234
2 - 6	228
3 - 7	222
2 - 7	216

All adjustments to transformer should be performed only by a qualified electrician. Disconnect power before working on the transformer.



This transformer takes 240 volts 3 phase input and provides four wire output at 208y/120 volts three phase.

**There is one set of taps on each of the three coils. All tap jumpers must be connected in the same position on all three coils.**

### INSTRUCTIONS FOR CONNECTING THIS TRANSFORMER:

Connect three phase power from utility to H1, H2, and H3.

If voltage is 240 volts (nominal voltage) connect tap jumpers between taps numbered 3 and 5 (factory default setting)

**If voltage is higher than 240 volts connect the tap jumpers to:**

Taps 4 and 6 if 246 volts

Taps 4 and 5 is 252 volts

**If utility voltage is higher than 252 volts do not connect this transformer and contact MGM for assistance.**

**If voltage is below 240 volts connect the tap jumpers to:**

Taps 3 and 6 if 234 volts

Taps 2 and 6 if 228 volts

Taps 3 and 7 if 222 volts

Taps 2 and 7 if 216 volts

Once jumpers are set X1, X2 and X3 should be connected to distribution system to provide 208 volts three phase power  
X0 is the neutral