



MGM TRANSFORMER COMPANY

5701 SMITHWAY STREET • CITY OF COMMERCE, CA 90040

(323)726-0888 • FAX (323)726-8224

Buck Boost Wiring Diagrams – Single Phase

Figure C

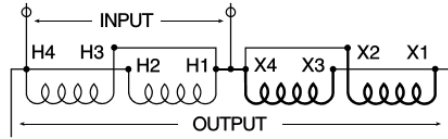


Figure D

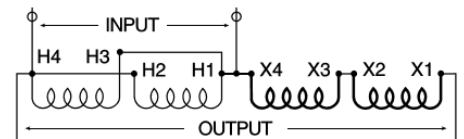


Figure E

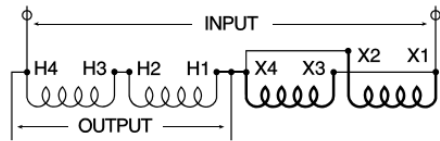


Figure F

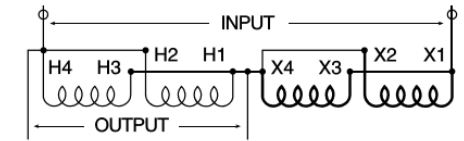


Figure G

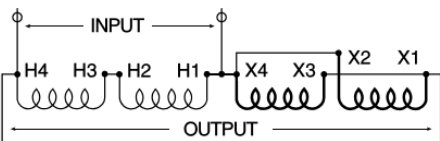


Figure H

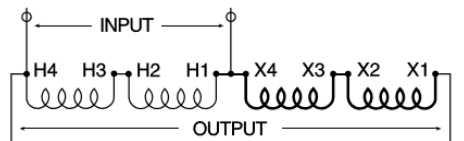


Figure I

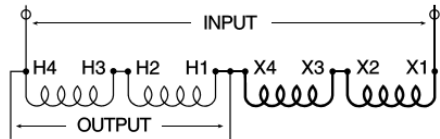
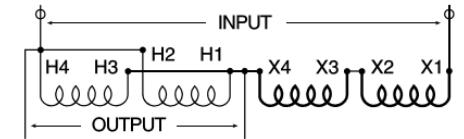


Figure J



Buck Boost Wiring Diagrams – Single Phase for Three Phase Applications

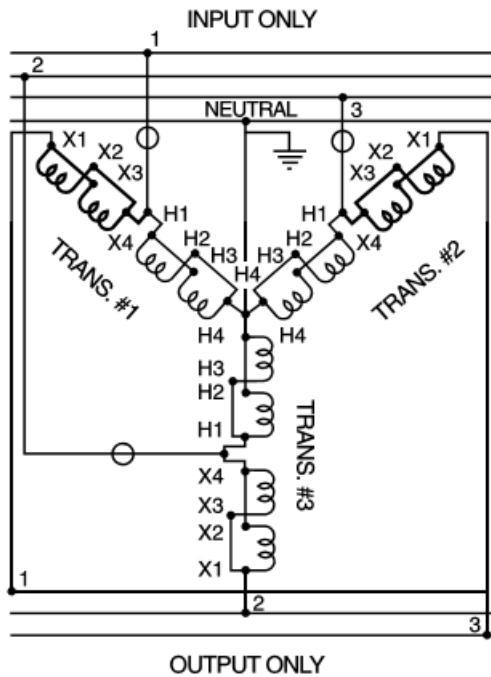


FIG. AA

WYE

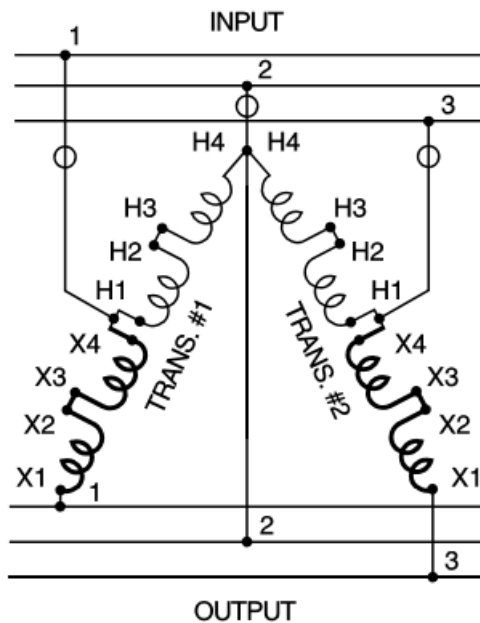


FIG. BB

OPEN DELTA



MGM TRANSFORMER COMPANY

5701 SMITHWAY STREET • CITY OF COMMERCE, CA 90040

(323)726-0888 • FAX (323)726-8224

Buck Boost Wiring Diagrams – Single Phase for Three Phase Applications

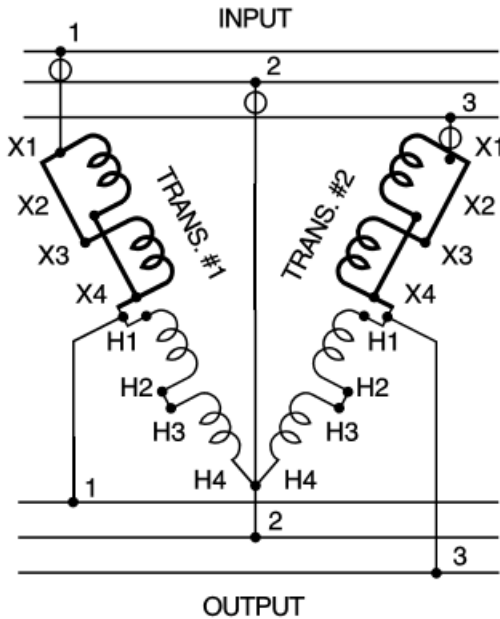


FIG. CC OPEN DELTA

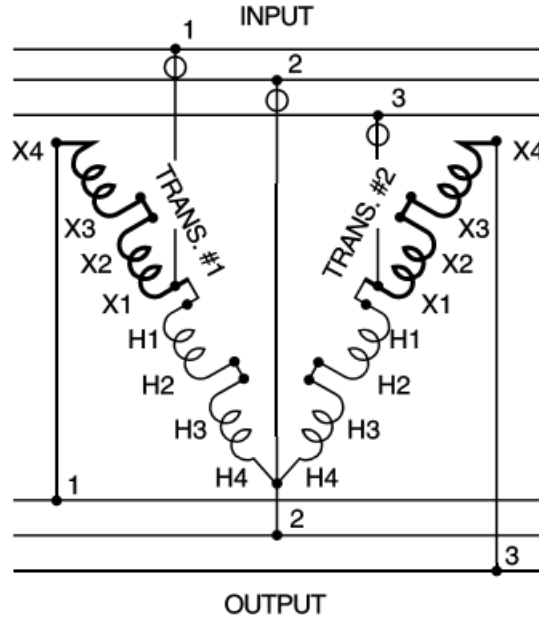


FIG. DD OPEN DELTA

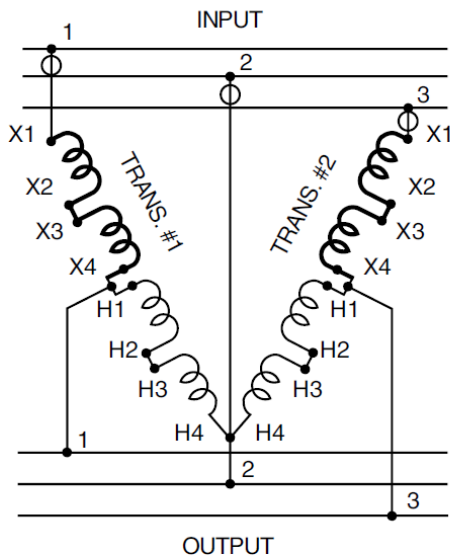


FIG. EE OPEN DELTA

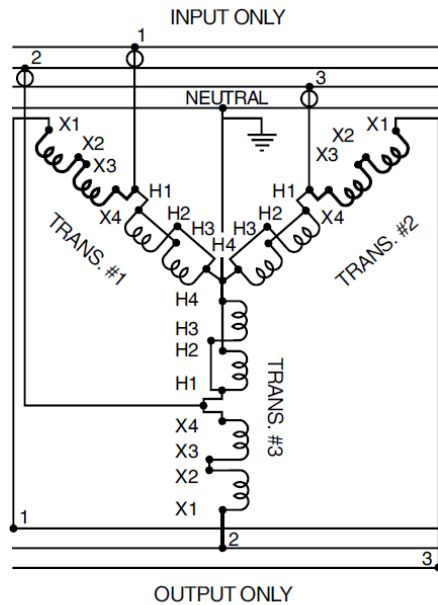


FIG. FF WYE

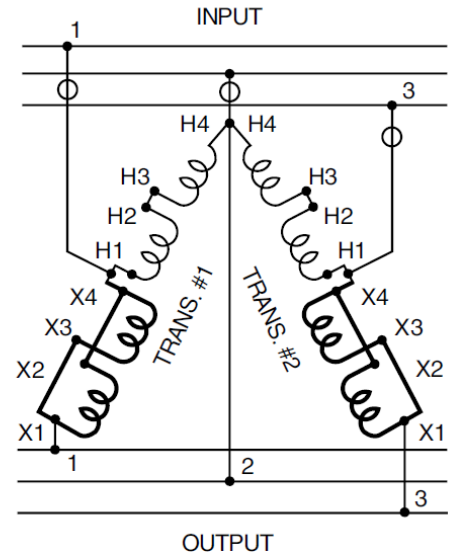


FIG. GG OPEN DELTA

Symbol O indicates where to install over-current protective device, typically a circuit breaker or a fuse is used.