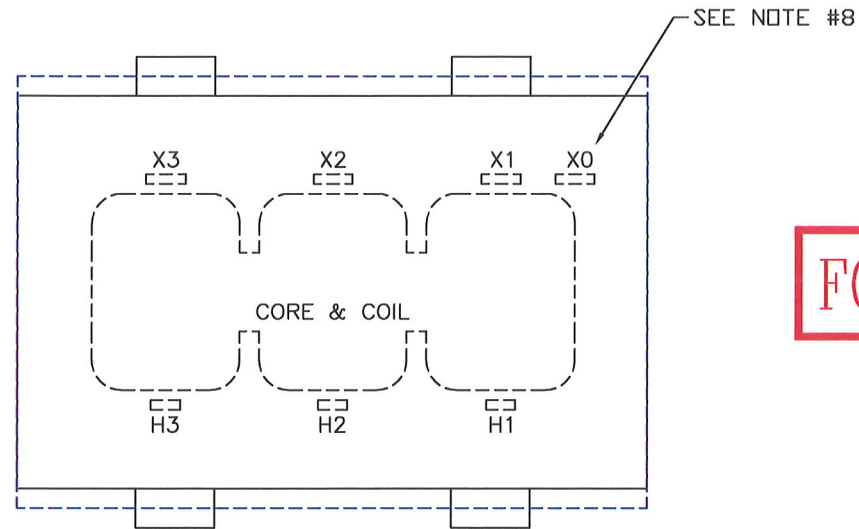
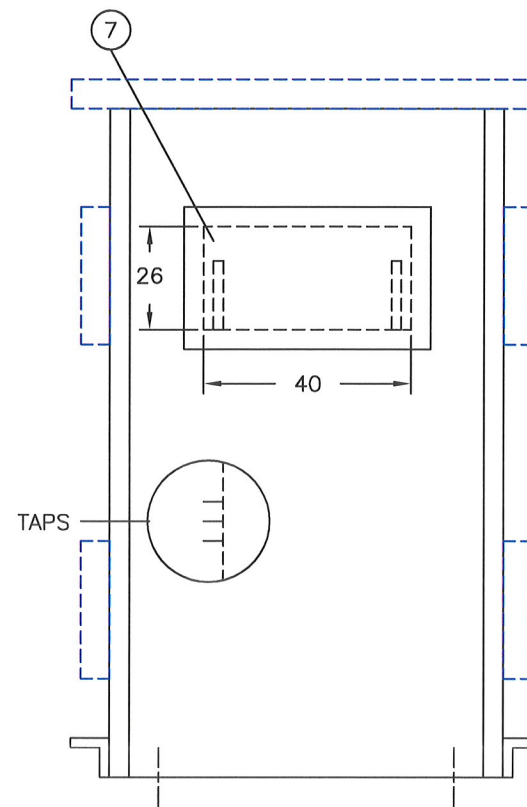
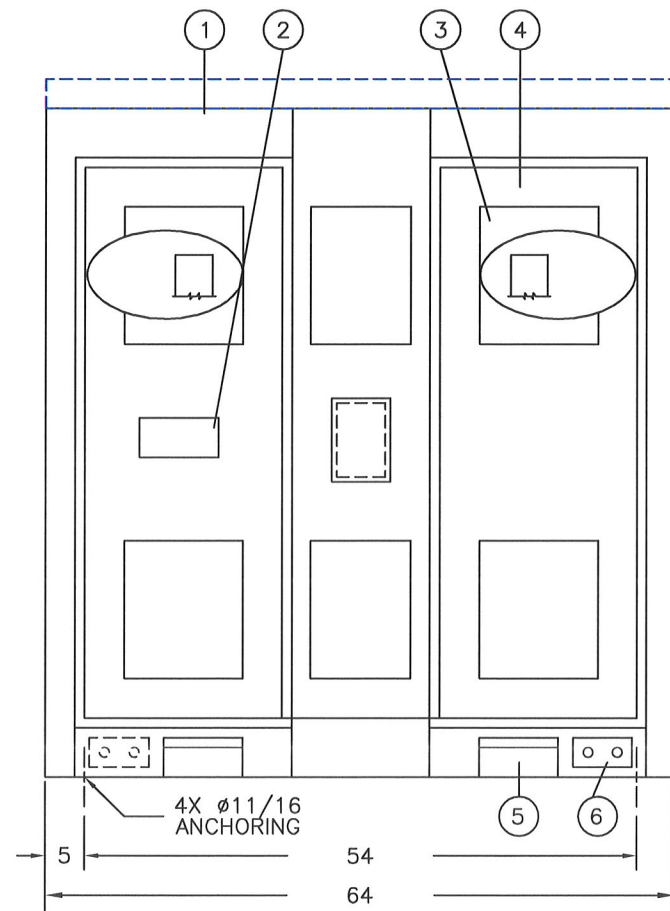
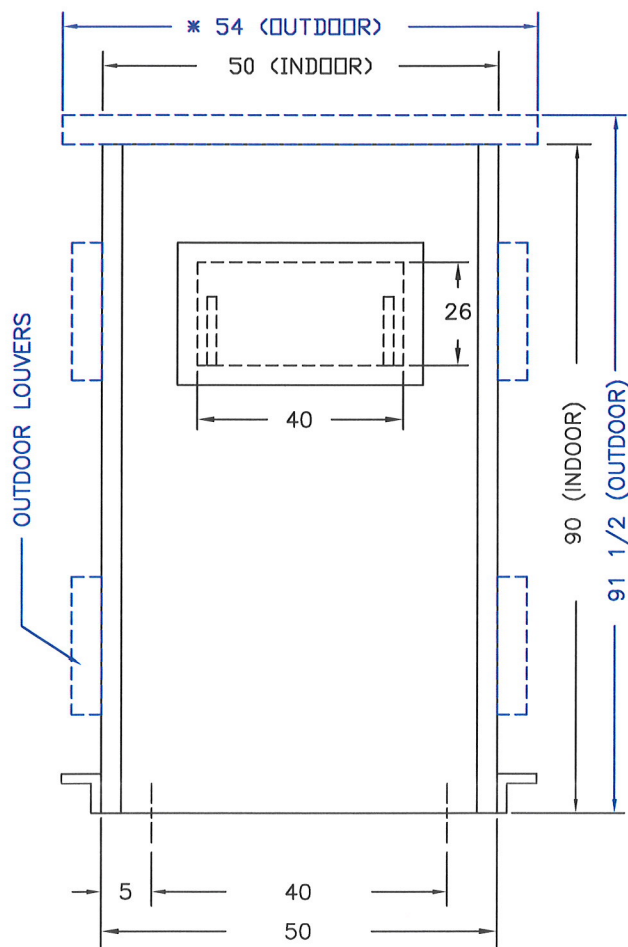


°C RISE	KVA	KV CLASS	KV BIL
150°C	300	15	60, 95



FOR REFERENCE ONLY

LEGEND		
ITEM	QTY	DESCRIPTIONS
1	2	REMOVABLE TOP COVER – FLUSH FOR INDOOR, * CAPPED FOR OUTDOOR
2	1	DIAGRAMATIC NAMEPLATE
3	8	VENT-SCREEN FOR INDOOR/ LOUVERS FOR OUTDOOR
4	4	HINGED PANEL
5	4	JACK PAD
6	2	GROUND PAD
7	2	CABLE/BUS ENTRY CUTOUT WITH COVER



S.O. NO:	
DWG FOR: <input type="checkbox"/> RECORD <input type="checkbox"/> APPROVAL <input type="checkbox"/> QUOTE	
CUST/JOB NAME:	
CUST ORDER NO:	
SERIAL NO:	
ID TAG:	
KVA:	
HIGH VOLTAGE:	
LOW VOLTAGE:	
HV TAPS: 2A2B 2 1/2%	
HV-KV BIL:	
LV-KV BIL: 10	
PHASE: 3	
FREQ-HZ: 60	
TEMP RISE-°C:	
INSUL. CLASS: 220°C	
COOLING CLASS: AA	
WINDING COND:	
PAINT/COATING: ASA 61 LIGHT GREY	
APPRX WT-LBS:	
HV COORD:	<input type="checkbox"/> INDOOR
LV COORD:	<input type="checkbox"/> OUTDOOR

**NOTES:**

- 1) THIS DRAWING IS NOT FOR CONSTRUCTION PURPOSES.
- 2) K FACTOR MIGHT CHANGE CASE DIMENSIONS.
- 3) TRANSFORMERS ARE MANUFACTURED AND TESTED PER APPLICABLE ANSI, NEMA AND IEEE STDS, LATEST REVISION.
- 4) UNLESS OTHERWISE SPECIFIED, ALL DIMENSIONS ARE IN INCHES WITH ±1/4" TOLERANCE.
- 5) TRANSFORMER IS U.L. LISTED.
- 6) TRANSFORMER NOT TO BE INSTALLED IN PUBLIC ACCESSIBLE LOCATION, OTHERWISE IT MUST BE FENCED OR ISOLATED.
- 7) WEIGHTS, DIMENSIONS & CONSTRUCTION MAY CHANGE WITHOUT PRIOR NOTICE.
- 8) FOR LV WYE CONNECTION ONLY.

REVISIONS	PAGE 1 OF 1	SCALE: NONE	TITLE: DRY TRANSFORMER OUTLINE ____ DRY TYPE UNIT SUBSTATION
	BY	DATE	
	CADD: LGL	8/20/99	
	CHKD: VHA	9/18/03	
	APPD:		



**MGM TRANSFORMER CO.**  
CITY OF COMMERCE, CALIFORNIA  
TEL: (323) 726-0888, FAX: (323) 726-8192

DRW NO. **906450U** REV.