

SINGLE PHASE

MGM TRANSFORMERS  
 PADMOUNTED TRANSFORMERS  
 ONAN 65°C RISE  
 VANPAD I – 125KV-BIL & BELOW

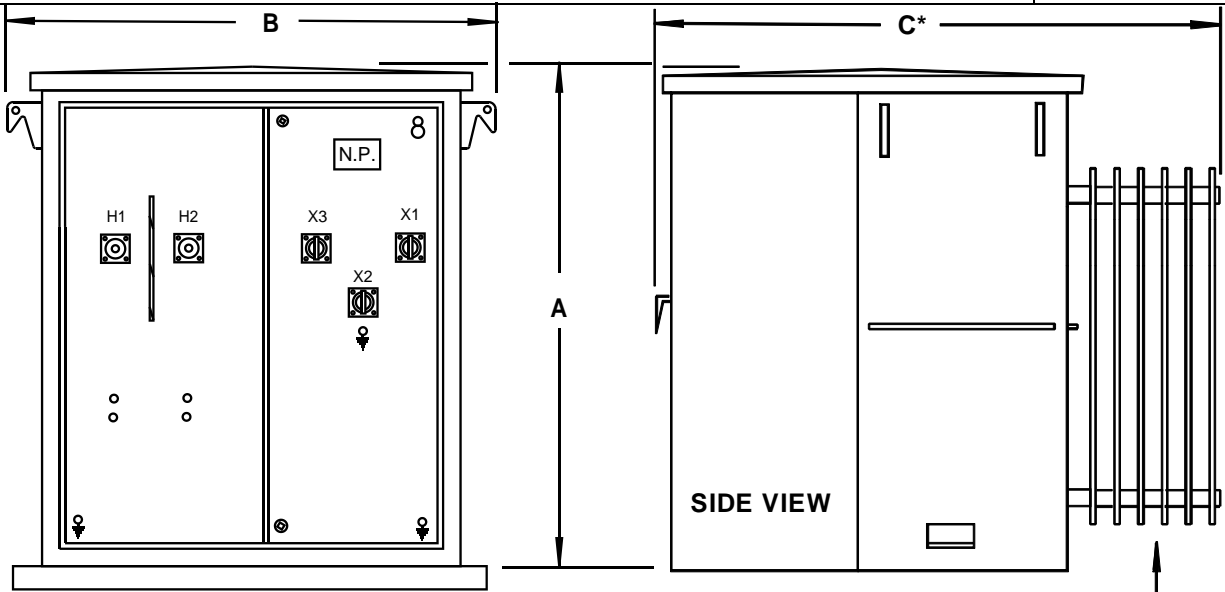
WACO, TEXAS

60 HZ

SECTION 16

PAGE 2

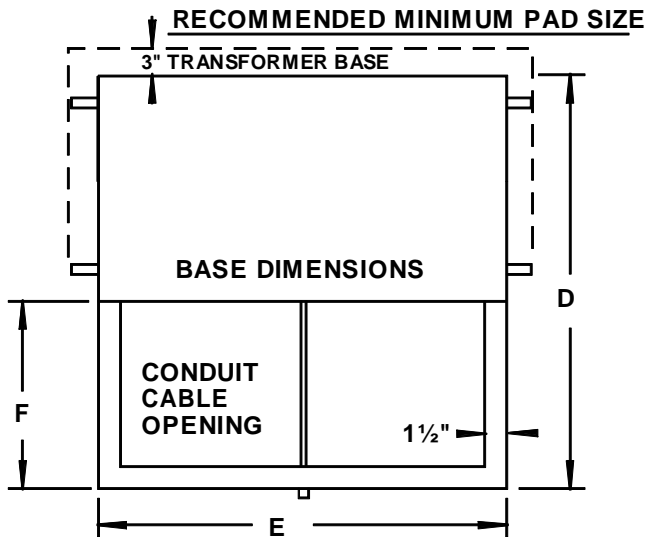
7-19-12



FRONT VIEW - DOORS REMOVED

\*DIMENSIONS INCLUDE COOLERS

**WEIGHTS & DIMENSIONS**



**RECOMMENDED MINIMUM PAD SIZE**

KVA	T.W.	A	B	C
25	900	34	40	36
37½	1000	34	40	40
50	1100	34	40	40
75	1400	34	40	40
100	1500	34	40	40
167	2000	44	40	*44
250	2400	44	40	*51
333	3100	44	40	*58
500	4000	56	49	*66

**BASE DIMENSIONS**

KVA	D	E	F	GALLONS
25	33	33	17	60
37½	37	33	17	60
50	37	33	17	70
75	37	33	17	67
100	37	33	17	65
167	39	33	17	105
250	39	33	17	105
333	42	33	17	105
500	42	40	17	180

TRANSFORMERS CONFORM TO NEMA & ANSI STANDARDS WHERE APPLICABLE.

TRANSFORMER TESTS PER ANSI C57.12.90

ADD 10" TO OVERALL HEIGHT FOR BAYONET FUSES.

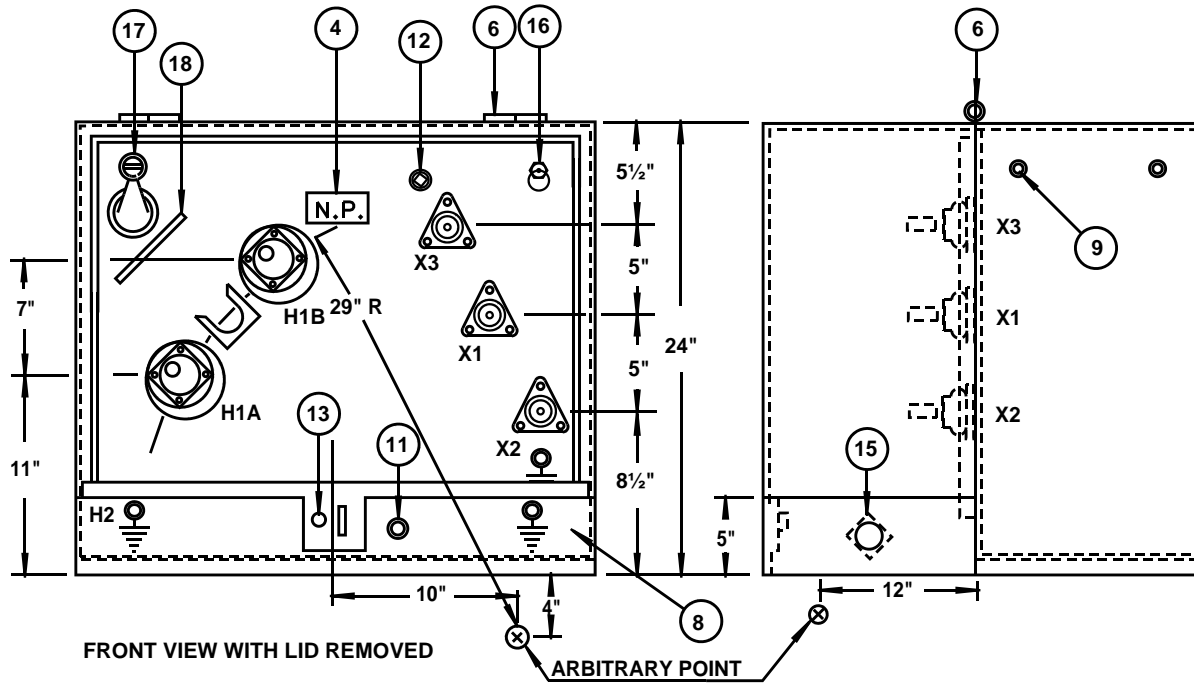
TRANSFORMERS SUPPLIED WITH STANDARD DISTRIBUTION ACCESSORIES PER ANSI C57.12. REFER TO FACTORY FOR SPECIAL FEATURES.

DEAD FRONT SAME DIMENSIONS

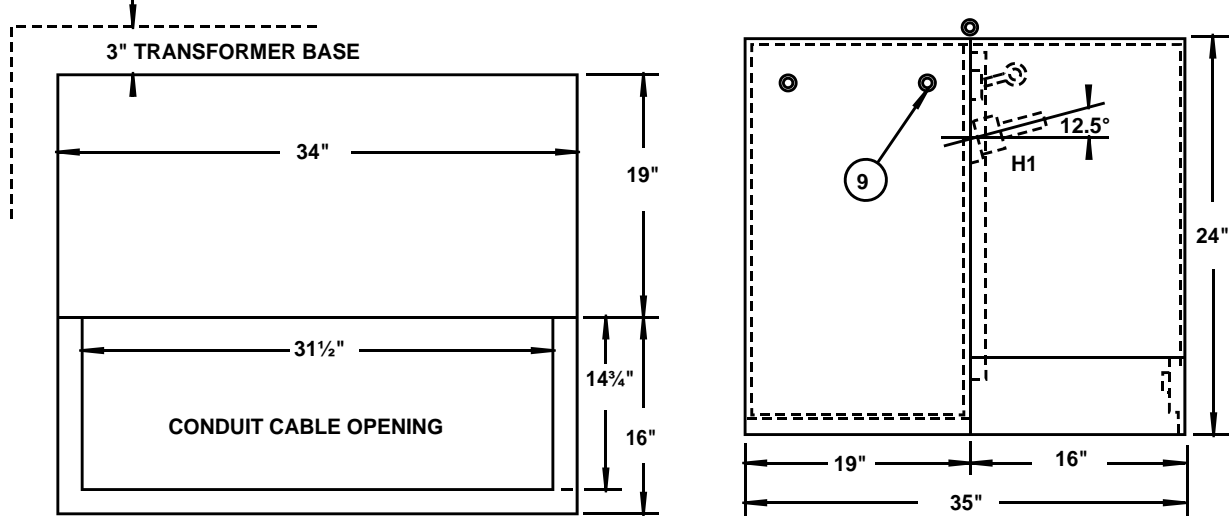
**STANDARD ACCESSORIES**

1. TAMPERPROOF, REMOVABLE, BOLTED-ON CABINET WITH OPEN BOTTOM, REMOVABLE LIFTOFF DOORS, STAINLESS STEEL HINGES AND THREE POINT LATCHING MECHANISM. DOORS DESIGNED TO PREVENT ACCESS TO HV COMPARTMENT UNTIL LV COMPARTMENT DOOR IS OPENED. PROVISIONS FOR PADLOCKING ON LV COMPARTMENT DOOR. CAPTIVE PENTA HEAD COMPARTMENT DOOR LOCKING BOLT PROVIDED.
2. REMOVABLE COVER (TAMPERPROOF)
3. WELDED ON COVER
4. BOLTED ON INSPECTION PLATE
5. LIFTING LUGS (4EA. REQUIRED)
6. DIAGRAMMATIC CORROSION RESISTANT NAMEPLATE
7. STEEL BARRIER BETWEEN HV & LV COMPARTMENTS
8. TWO EACH LV BUSHINGS WITH NEMA 4 HOLE SPADE TERMINALS
9. ONE EACH NEUTRAL BUSHING WITH NEMA 4 HOLE SPADE TERMINAL AND REMOVABLE GROUND STRAP (1/2" – 13 TAP GROUND BOSS)
10. TWO EACH HIGH VOLTAGE BUSHINGS WITH EYEBOLT TERMINALS
11. BOTTOM OF TRANSFORMER UNDERCOATED TO PREVENT CORROSION
12. TANK GROUND BOSSES (1/2" – 13 TAPS) (EACH COMPARTMENT)
13. TRANSFORMER BASE WITH PROVISIONS FOR ROLLING
14. AUTOMATIC PRESSURE RELIEF VALVE
15. DRAIN PLUG
16. FILLER PLUG
17. EXTERNALLY OPERATED NO-LOAD TAPCHANGER
18. PROVISIONS FOR MOUNTING SURGE ARRESTERS
19. PAINT COLOR MUNSELL 7.0 GY 3.29/1.5 BELL GREEN

**MGM TRANSFORMERS**  
**WACO, TEXAS**  
**LOW PROFILE PAD MOUNTED TRANSFORMERS – MINERAL OIL FILLED**  
**SINGLE PHASE**                      **OISC**                      **65°C RISE**                      **60 HZ**



**RECOMMENDED MINIMUM PAD SIZE**



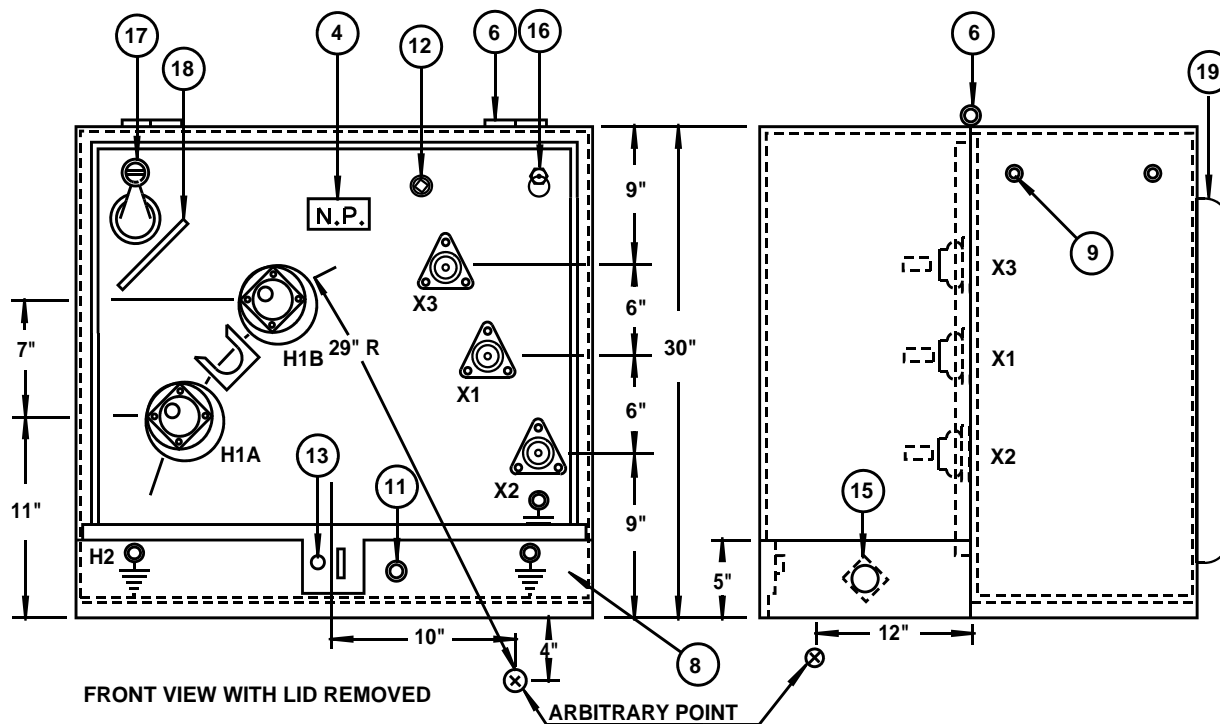
**ROUTINE TESTS PER ANSI C57.12.90**

<u>KVA</u>	<u>T.W.</u>	<u>GAL OIL</u>
15	800	57
25	825	55
37½	900	53
50	1000	51
75	1100	49

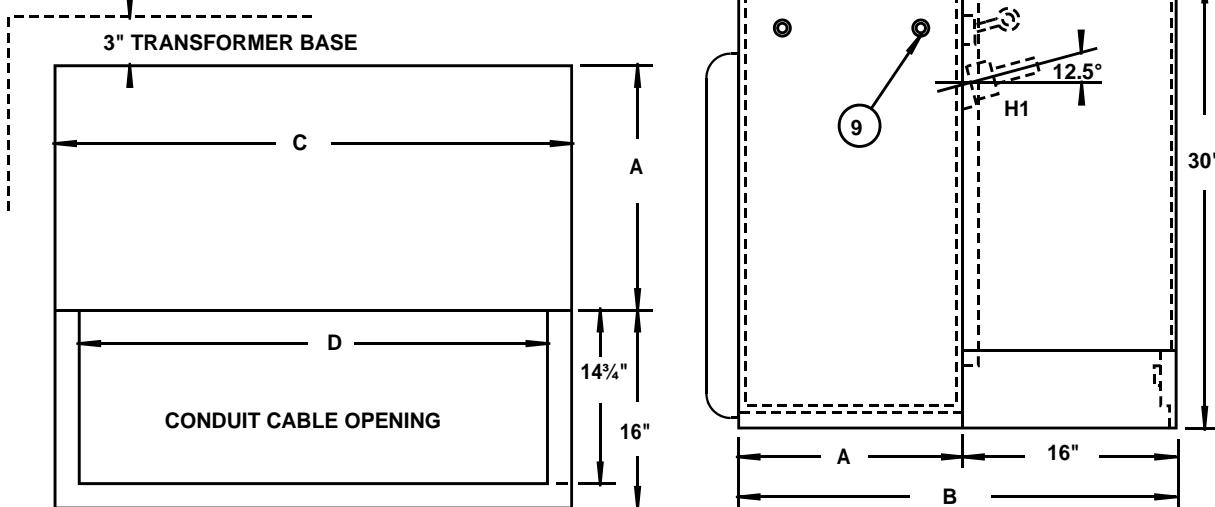
**TRANSFORMERS SUPPLIED WITH  
STANDARD ACCESSORIES PER  
ANSI C57.12.25 REFER TO FACTORY FOR  
SPECIAL FEATURES**

**15 KV & BELOW  
STANDARD ACCESSORIES**

1. TWO EACH DEAD FRONT LOADBREAK SAFETY PLUG HIGH VOLTAGE BUSHINGS OR BUSHING WELLS AS REQUIRED
2. THREE EACH 5/8" EPOXY STUD LOW VOLTAGE BUSHINGS (EXTERNALLY MOUNTED)
3. LOW VOLTAGE NEUTRAL STUD GROUNDED TO TANK WITH DETACHABLE STRAP
4. DIAGRAMMATIC CORROSION RESISTANT NAMEPLATE
5. TANK GROUND BOSS (1/2" – 13 TAP)
6. HINGED FRONT COVER SUITABLE FOR REMOVING IN OPEN POSITION
7. BOTTOM OPEN FOR CONDUIT CABLE ENTRANCE
8. REMOVABLE FRONT SILL
9. LIFTING LUGS REMOVABLE
10. FRONT COMPARTMENT LIFTING HANDLE (RECESSED) PROVISION FOR PADLOCKING (7/16" PADLOCK)
11. 1/2" DRAIN PLUG
12. ONE INCH FILLING PLUG
13. PAINT COLOR MUNSELL 7.0 GY 3.29/1.5 BELL GREEN
14. BOTTOM OF TRANSFORMER UNDERCOATED TO PREVENT CORROSION
15. 2" ACCESS HOLE WITH COVER IN SIDE OF SILL
16. AUTOMATIC PRESSURE RELIEF VALVE
17. LOADBREAK EXTERNALLY REMOVABLE BAYONET FUSE ASSEMBLY WITH INTERNAL FAULT SENSING ISOLATION LINK
18. HIGH VOLTAGE FUSE OIL DRIP SHIELD
19. HIGH VOLTAGE PARKING STAND



**RECOMMENDED MINIMUM PAD SIZE**



**ROUTINE TESTS PER ANSI C57.12.90**

<u>KVA</u>	<u>T.W.</u>	<u>GAL OIL</u>	<u>A</u>	<u>B</u>	<u>C</u>	<u>D</u>
100	1400	65	20	36	34	31 1/2
167	1700	84	25	41	36	33 1/2

TRANSFORMERS SUPPLIED WITH  
 STANDARD ACCESSORIES PER  
 ANSI C57.12.25 REFER TO FACTORY  
 FOR SPECIAL FEATURES

**15 KV & BELOW  
STANDARD ACCESSORIES**

1. TWO EACH DEAD FRONT LOADBREAK SAFETY PLUG HIGH VOLTAGE BUSHINGS OR BUSHING WELLS AS REQUIRED
2. THREE EACH 1" EPOXY STUD LOW VOLTAGE BUSHINGS (EXTERNALLY MOUNTED)
3. LOW VOLTAGE NEUTRAL STUD GROUNDED TO TANK WITH DETACHABLE STRAP
4. DIAGRAMMATIC CORROSION RESISTANT NAMEPLATE
5. TANK GROUND BOSS (1/2" – 13 TAP)
6. HINGED FRONT COVER SUITABLE FOR REMOVING IN OPEN POSITION
7. BOTTOM OPEN FOR CONDUIT CABLE ENTRANCE
8. REMOVABLE FRONT SILL
9. LIFTING LUGS REMOVABLE
10. FRONT COMPARTMENT LIFTING HANDLE (RECESSED) PROVISION FOR PADLOCKING (7/16" PADLOCK)
11. 1/2" DRAIN PLUG
12. ONE INCH FILLING PLUG
13. PAINT COLOR MUNSELL 7.0 GY 3.29/1.5 BELL GREEN
14. BOTTOM OF TRANSFORMER UNDERCOATED TO PREVENT CORROSION
15. 2" ACCESS HOLE WITH COVER IN SIDE OF SILL
16. AUTOMATIC PRESSURE RELIEF VALVE
17. LOADBREAK EXTERNALLY REMOVABLE BAYONET FUSE ASSEMBLY WITH INTERNAL FAULT SENSING ISOLATION LINK
18. HIGH VOLTAGE FUSE OIL DRIP SHIELD
19. COOLING FINS (167 KVA ONLY)
20. HIGH VOLTAGE PARKING STAND

**MGM TRANSFORMERS**  
**PADMOUNTED TRANSFORMERS**  
**THREE PHASE OISC 65°C RISE**  
**VANPAD III – 125KV-BIL & BELOW**

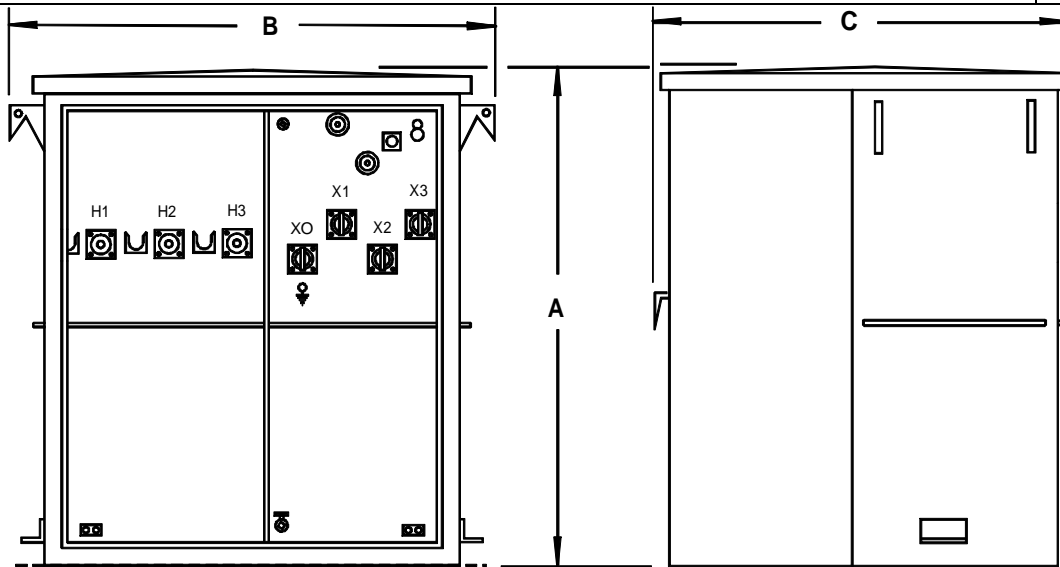
**WACO, TEXAS**

**60 HZ**

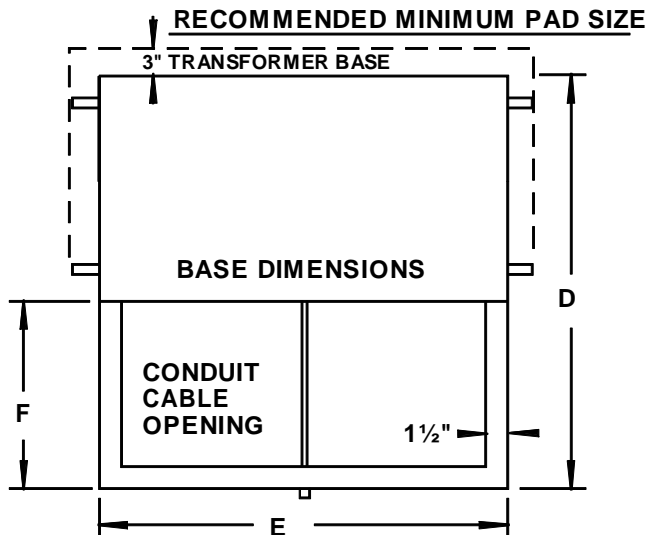
**SECTION 18**

**PAGE 2**

**7-19-12**



**FRONT VIEW - DOORS REMOVED**



<u>KVA</u>	<u>WEIGHTS &amp; DIMENSIONS</u>			
	<u>T.W.</u>	<u>GAL.</u>	<u>A</u>	<u>B</u>
30	1800	110	42	57
45	1900	110	42	57
75	2100	120	42	57
112½	2400	130	42	57
150	2600	125	42	57

<u>KVA</u>	<u>BASE DIMENSIONS</u>			
	<u>C</u>	<u>D</u>	<u>E</u>	<u>F</u>
30	37	34	50	18
45	37	34	50	18
75	39	36	50	18
112½	41	38	50	18
150	41	38	50	18

TRANSFORMERS CONFORM TO NEMA & ANSI STANDARDS WHERE APPLICABLE.

TRANSFORMER TESTS PER ANSI C57.12.90

ADD 10" TO OVERALL HEIGHT FOR BAYONET FUSES.

TRANSFORMERS SUPPLIED WITH STANDARD DISTRIBUTION ACCESSORIES PER ANSI C57.12.26 REFER TO FACTORY FOR SPECIAL FEATURES.

LIVE FRONT SAME DIMENSIONS

**VANPAD III – 125KV-BIL & BELOW**

**STANDARD ACCESSORIES**

1. FOUR LIFTING HOOKS
2. PER ASTM D-3487 TYPE II MINERAL OIL FILLED WITH LESS THAN 1 P.P.M. OF P.C.B. AT TIME OF MANUFACTURE
3. JACKING PADS
4. ONE INCH DRAIN VALVE
5. TANK GROUNDING PADS (1/2" – 13 TAP) (EACH COMPARTMENT)
6. TRANSFORMER BASE DESIGNED FOR ROLLING
7. THREE LOW VOLTAGE BUSHINGS WITH NEMA 4 HOLE SPADE TERMINALS
8. ONE LV NEUTRAL BUSHING WITH NEMA 4 HOLE SPADE TERMINAL AND EXTERNAL GROUNDING STRAP ( IF LOW VOLTAGE IS "Y" OR W/CENTER TAP)
9. NEUTRAL GROUND PAD (1/2" – 13 TAP)
10. DIAGRAMMATIC CORROSION RESISTANT NAMEPLATE
11. TAMPERPROOF, REMOVABLE, BOLTED ON CABINET WITH OPEN BOTTOM. REMOVABLE LIFT OFF DOORS, STAINLESS STEEL HINGES AND THREE POINT LATCHING MECHANISM. DOORS DESIGNED TO PREVENT ACCESS TO HV COMPARTMENT UNTIL LV COMPARTMENT DOOR IS OPENED. PROVISIONS FOR PADLOCKING ON LV COMPARTMENT DOOR. CAPTIVE PENTA HEAD COMPARTMENT DOOR LOCKING BOLT PROVIDED
12. THREE EACH DEAD FRONT HIGH VOLTAGE BUSHING WELLS ARRANGED FOR RADIAL FEED WITH PARKING STANDS
13. FULL LENGTH STEEL BARRIER BETWEEN HIGH VOLTAGE AND LOW VOLTAGE COMPARTMENTS
14. TAMPERPROOF, REMOVABLE COVER FOR ACCESS TO INSPECTION PLATE
15. TANK COVER WELDED ON
16. ONE INCH FILLING PLUG
17. BOLTED ON INSPECTION PLATE
18. AUTOMATIC PRESSURE RELIEF VALVE
19. BOTTOM OF TRANSFORMER UNDERCOATED TO PREVENT CORROSION
20. EXTERNAL NO-LOAD TAPCHANGER
21. PAINT COLOR MUNSELL 7.0 GY 3.29/1.5 BELL GREEN



**MGM TRANSFORMERS**  
**PAD MOUNTED TRANSFORMERS**  
**THREE PHASE OISC 65°C RISE**  
**VANPAD III - 125KV-BIL & BELOW**

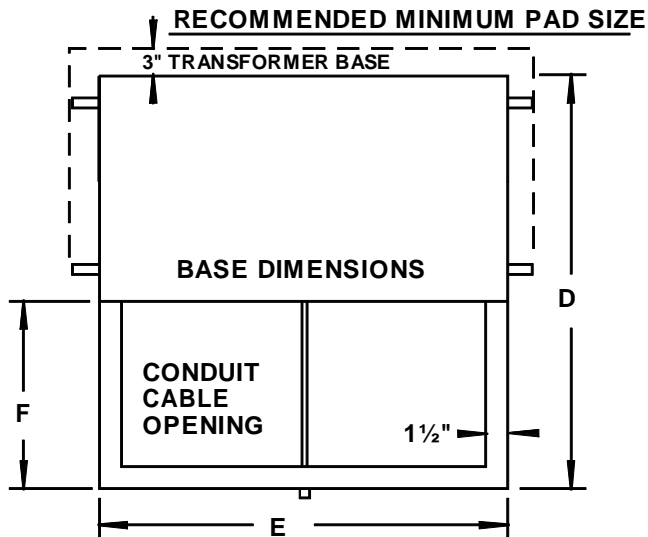
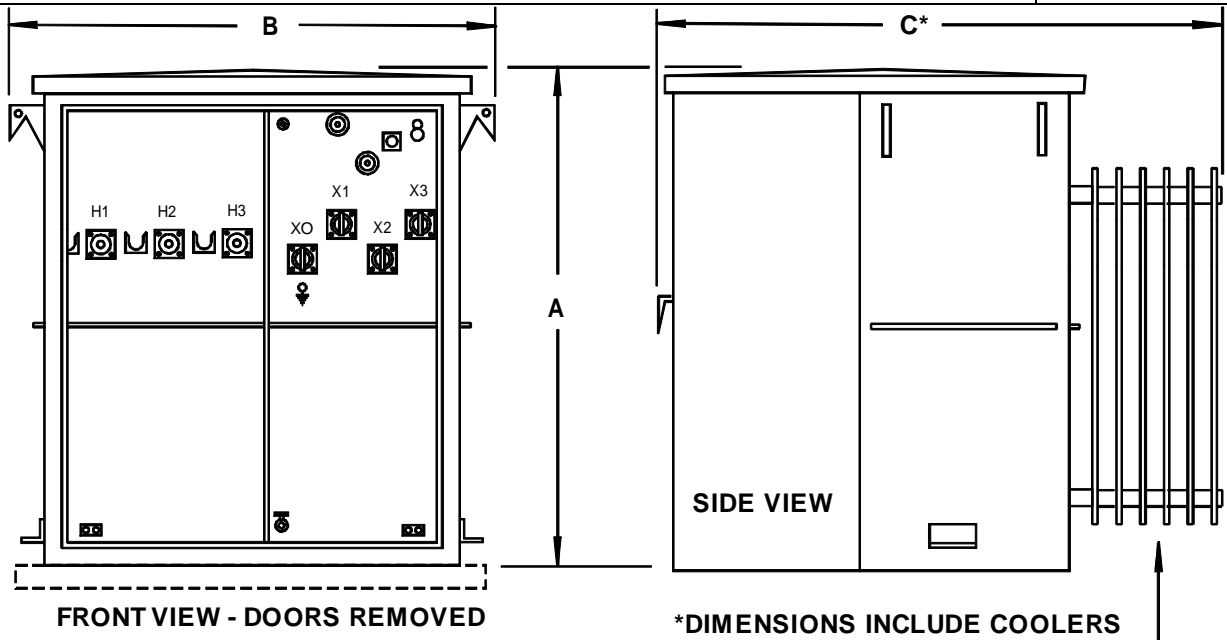
**WACO, TEXAS**

**60 HZ**

**SECTION 18**

**PAGE 4**

**7-19-12**



<b>WEIGHTS &amp; DIMENSIONS</b>				
<u>KVA</u>	<u>T.W.</u>	<u>GAL.</u>	<u>A</u>	<u>B</u>
225	3700	185	52	64
300	4100	200	52	64
500	5100	240	56	64
750	6700	310	65	65
1000	8200	400	72	67
1500	10000	430	72	73
2000	13000	480	72	82
2500	15000	590	78	82
3000	17000	610	78	82
3750	20000	750	82	92
5000	24000	840	82	98

ABOVE 5000 KVA REFER TO FACTORY

<b>BASE DIMENSIONS</b>				
<u>KVA</u>	<u>C</u>	<u>D</u>	<u>E</u>	<u>F</u>
225	*50	38	55	18
300	*50	40	55	18
500	*60	44	55	20
750	*60	46	56	20
1000	*66	48	58	20
1500	*72	48	64	20
2000	*74	50	70	20
2500	*83	54	70	22
3000	*91	56	70	22
3750	*91	60	80	24
5000	*99	62	86	24

ABOVE 5000 KVA REFER TO FACTORY

TRANSFORMERS CONFORM TO NEMA & ANSI STANDARDS WHERE APPLICABLE.

TRANSFORMER TESTS PER ANSI C57.12.90

ADD 10" TO OVERALL HEIGHT FOR BAYONET FUSES.

TRANSFORMERS SUPPLIED WITH STANDARD DISTRIBUTION ACCESSORIES PER ANSI C57.12.26 REFER TO FACTORY FOR SPECIAL FEATURES.

LIVE FRONT SAME DIMENSIONS

**VANPAD III – 125KV-BIL & BELOW**

**STANDARD ACCESSORIES**

1. FOUR LIFTING HOOKS
2. PER ASTM D-3487 TYPE II MINERAL OIL FILLED WITH LESS THAN 1 P.P.M. OF P.C.B. AT TIME OF MANUFACTURE
3. JACKING PADS
4. ONE INCH DRAIN VALVE
5. TANK GROUNDING PADS (1/2" – 13 TAP) (EACH COMPARTMENT)
6. THREE LOW VOLTAGE BUSHINGS WITH NEMA 4 OR 6 HOLE SPADE TERMINALS
7. ONE LV NEUTRAL BUSHING WITH NEMA 4 OR 6 HOLE SPADE TERMINAL AND EXTERNAL GROUNDING STRAP ( IF LOW VOLTAGE IS "Y" OR W/CENTER TAP)
8. NEUTRAL GROUND PAD (1/2" – 13 TAP)
9. DIAGRAMMATIC CORROSION RESISTANT NAMEPLATE
10. FULL LENGTH STEEL BARRIER BETWEEN HIGH VOLTAGE AND LOW VOLTAGE COMPARTMENTS
11. THREE EACH DEAD FRONT HIGH VOLTAGE BUSHING WELLS ARRANGED FOR RADIAL FEED WITH PARKING STANDS
12. TAMPERPROOF, REMOVABLE, BOLTED ON CABINET WITH OPEN BOTTOM. REMOVABLE LIFT OFF DOORS, STAINLESS STEEL HINGES AND THREE POINT LATCHING MECHANISM. DOORS DESIGNED TO PREVENT ACCESS TO HV COMPARTMENT UNTIL LV COMPARTMENT DOOR IS OPENED. PROVISIONS FOR PADLOCKING ON LV COMPARTMENT DOOR. CAPTIVE PENTA HEAD COMPARTMENT DOOR LOCKING BOLT PROVIDED
13. TAMPERPROOF, REMOVABLE COVER FOR ACCESS TO INSPECTION PLATE
14. TRANSFORMER BASE DESIGNED FOR ROLLING
15. TANK COVER WELDED ON
16. ONE INCH FILLING PLUG
17. BOLTED ON INSPECTION UNDER COVER PLATE
18. AUTOMATIC PRESSURE RELIEF DEVICE
19. RADIATORS (FLEXOPLATE) (AS REQUIRED)
20. EXTERNAL NO-LOAD TAPCHANGER PADLOCKABLE IN ANY POSITION
21. OIL LEVEL GAUGE (750 KVA AND LARGER)
22. PROVISIONS FOR DIAL TYPE THERMOMETER (750 KVA AND LARGER)
23. PROVISIONS FOR PRESSURE VACUUM GAUGE (750 KVA AND LARGER)
24. BOTTOM OF TRANSFORMER UNDERCOATED TO PREVENT CORROSION
25. PAINT COLOR MUNSELL 7.0 GY 3.29/1.5 BELL GREEN

**MGM TRANSFORMERS**  
**PADMOUNTED TRANSFORMERS**  
**THREE PHASE OISC 65°C RISE**  
**VANPAD III - 125KV-BIL & BELOW**

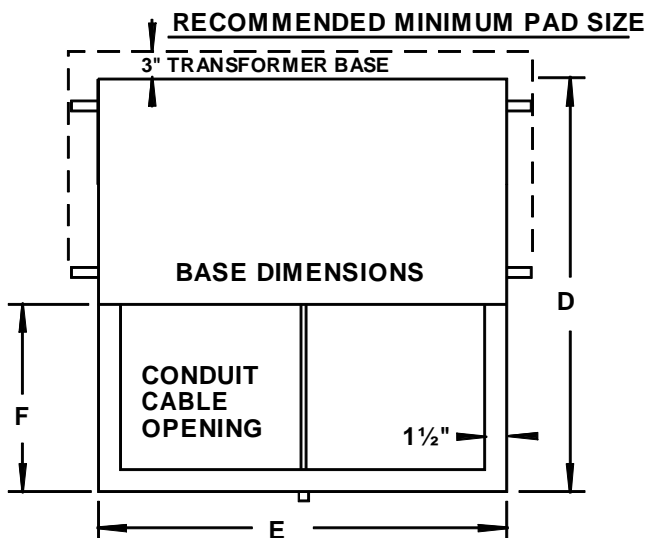
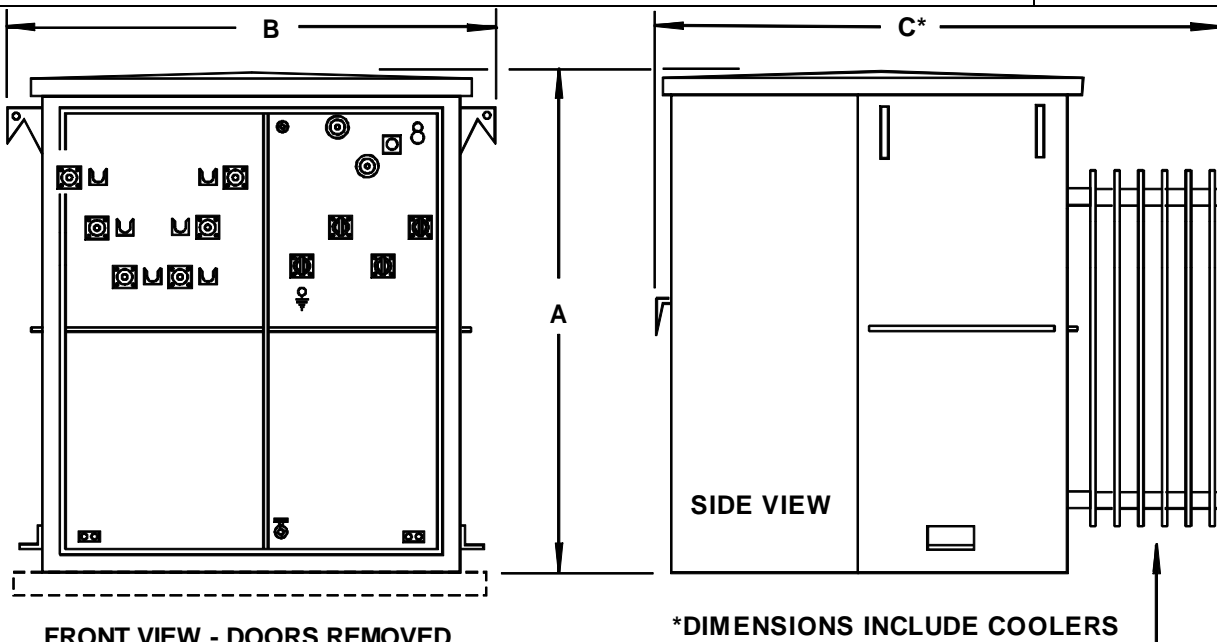
**WACO, TEXAS**

**60 HZ**

**SECTION 18**

**PAGE 6**

**7-19-12**



<b>WEIGHTS &amp; DIMENSIONS</b>				
<u>KVA</u>	<u>T.W.</u>	<u>GAL.</u>	<u>A</u>	<u>B</u>
30	2500	165	52	63
45	2600	165	52	63
75	2800	180	52	63
112½	3100	195	52	63
150	3300	190	52	63
225	4300	240	56	67
300	4600	235	56	67
500	6000	300	62	69
750	7500	370	65	74
1000	9100	450	72	74
1500	10500	435	72	74
2000	13000	480	72	82
2500	15000	590	78	82
3000	17000	610	78	82
3750	20000	750	82	92
5000	24000	840	82	98

ABOVE 5000 KVA REFER TO FACTORY

<b>BASE DIMENSIONS</b>				
<u>KVA</u>	<u>C</u>	<u>D</u>	<u>E</u>	<u>F</u>
30	37	34	56	18
45	37	34	56	18
75	39	36	56	18
112½	41	38	56	18
150	41	38	56	18
225	*50	40	58	18
300	*50	40	58	18
500	*58	44	60	20
750	*60	46	65	20
1000	*66	48	65	20
1500	*72	48	65	20
2000	*74	50	70	20
2500	*83	54	70	22
3000	*91	56	70	22
3750	*91	60	80	24
5000	*99	62	86	24

ABOVE 5000 KVA REFER TO FACTORY

TRANSFORMERS CONFORM TO NEMA & ANSI STANDARDS WHERE APPLICABLE.

TRANSFORMER TESTS PER ANSI C57.12.90

ADD 10" TO OVERALL HEIGHT FOR BAYONET FUSES.

TRANSFORMERS SUPPLIED WITH STANDARD DISTRIBUTION ACCESSORIES PER ANSI C57.12.26 REFER TO FACTORY FOR SPECIAL FEATURES.

LIVE FRONT SAME DIMENSIONS

**VANPAD III – 125KV-BIL & BELOW**

**STANDARD ACCESSORIES**

1. FOUR LIFTING HOOKS
2. PER ASTM D-3487 TYPE II MINERAL OIL FILLED WITH LESS THAN 1 P.P.M. OF P.C.B. AT TIME OF MANUFACTURE
3. JACKING PADS
4. ONE INCH DRAIN VALVE
5. TANK GROUNDING PADS (1/2" – 13 TAP) (EACH COMPARTMENT)
6. THREE LOW VOLTAGE BUSHINGS WITH NEMA 4 OR 6 HOLE SPADE TERMINALS
7. ONE LV NEUTRAL BUSHING WITH NEMA 4 OR 6 HOLE SPADE TERMINAL AND EXTERNAL GROUNDING STRAP ( IF LOW VOLTAGE IS "Y" OR W/CENTER TAP)
8. NEUTRAL GROUND PAD (1/2" – 13 TAP)
9. DIAGRAMMATIC CORROSION RESISTANT NAMEPLATE
10. FULL LENGTH STEEL BARRIER BETWEEN HIGH VOLTAGE AND LOW VOLTAGE COMPARTMENTS
11. SIX EACH DEAD FRONT HIGH VOLTAGE BUSHING WELLS ARRANGED FOR LOOP FEED WITH PARKING STANDS
12. TAMPERPROOF, REMOVABLE, BOLTED ON CABINET WITH OPEN BOTTOM. REMOVABLE LIFT OFF DOORS, STAINLESS STEEL HINGES AND THREE POINT LATCHING MECHANISM. DOORS DESIGNED TO PREVENT ACCESS TO HV COMPARTMENT UNTIL LV COMPARTMENT DOOR IS OPENED. PROVISIONS FOR PADLOCKING ON LV COMPARTMENT DOOR. CAPTIVE PENTA HEAD COMPARTMENT DOOR LOCKING BOLT PROVIDED
13. TAMPERPROOF, REMOVABLE COVER FOR ACCESS TO INSPECTION PLATE
14. TRANSFORMER BASE DESIGNED FOR ROLLING
15. TANK COVER WELDED ON
16. ONE INCH FILLING PLUG
17. BOLTED ON INSPECTION UNDER COVER PLATE
18. AUTOMATIC PRESSURE RELIEF DEVICE
19. RADIATORS (FLEXOPLATE) (AS REQUIRED)
20. EXTERNAL NO-LOAD TAPCHANGER PADLOCKABLE IN ANY POSITION
21. OIL LEVEL GAUGE (750 KVA AND LARGER)
22. PROVISIONS FOR DIAL TYPE THERMOMETER (750 KVA AND LARGER)
23. PROVISIONS FOR PRESSURE VACUUM GAUGE (750 KVA AND LARGER)
24. BOTTOM OF TRANSFORMER UNDERCOATED TO PREVENT CORROSION
25. PAINT COLOR MUNSELL 7.0 GY 3.29/1.5 BELL GREEN